

Our City Assembly



City Assembly Hall (City Hall Main Building)



Kyoto City Assembly Mascot

Matakichi & Matiline

The Kyoto City Assembly: deeply
connected to our lives.

Kyoto City Assembly

Role of the City Assembly

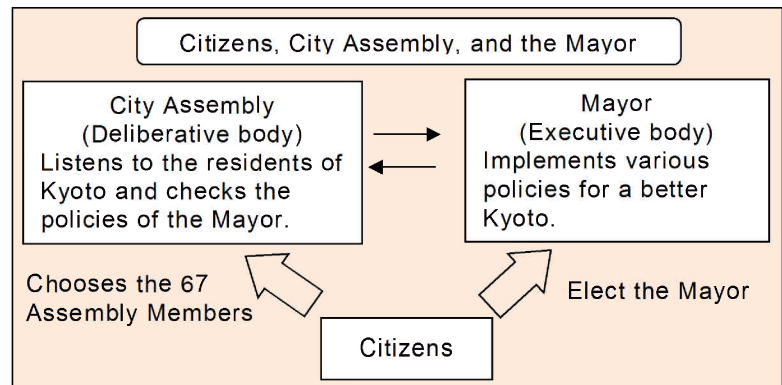
The **Kyoto City Assembly works for our welfare, education, roads, parks, and various other areas deeply connected to our lives.** Because of this, the city government must sufficiently reflect the opinions and views of the **people of Kyoto.** This is why **citizens in Kyoto** directly elect **Assembly Members** and the **Mayor** to entrust the operation of city governance [in a dual representation system].

The **City Assembly** holds the role of carefully discussing various municipal matters like city ordinances, etc. The City Assembly also serves as a deliberative body that decides the intent and primary direction of the city.

The **Mayor** serves as the executive body responsible for implementing policies for the public good as decided by the **Assembly.** The **City Assembly** is also in charge of monitoring so as to make sure city governance is being carried out properly.

In this way, the **City Assembly** and the **Mayor** work independently and on even footing while cooperating together like a pair of car wheels. They work to check one another to provide the **people of Kyoto** with a better-run city government.

Generally, a city assembly is called a *municipal assembly*. But the term **City Assembly** had already been in use in Kyoto since the Meiji Era.



Primary Powers of the City Assembly

In order for the City Assembly to sufficiently represent the people of Kyoto, it is entrusted with various powers.

○ Voting

The **Assembly's** most fundamental power, voting, allows for the enactment of ordinances, restructuring, deciding on budgets, creating major contracts, and other vital city decisions.

○ Right to Vote and Right to Consent

They elect the Chairperson, Vice-Chairperson, Election Committee, and others.

City Assembly also affirms the appointment of the **Mayor**, Deputy Mayor, Auditors, etc.

○ Examination Rights and the Right to Request Supervision

With this power, the City Assembly inspects paperwork and account statements related to City activity, manages general affairs, and inspects expenditures and the execution of Assembly decisions. Also, the Assembly can request inspections and inspection reports from auditors.

○ Investigatory Rights

The **City Assembly** can conduct an independent investigation of city affairs as a group, and can demand the appearance and/or testimony of individuals as necessary.

○ Right to Submit Opinions

The Assembly may submit opinions to the Diet or related ministries concerning the public interest of the city.

○ Right to Accept Petitions and Appeals

The Council receives appeals concerning city governance as well as petitions and appeals from **residents.**

Organization of the City Assembly

The City Assembly is Composed of Assembly Members Chosen through Public Elections.

○ Assembly Members

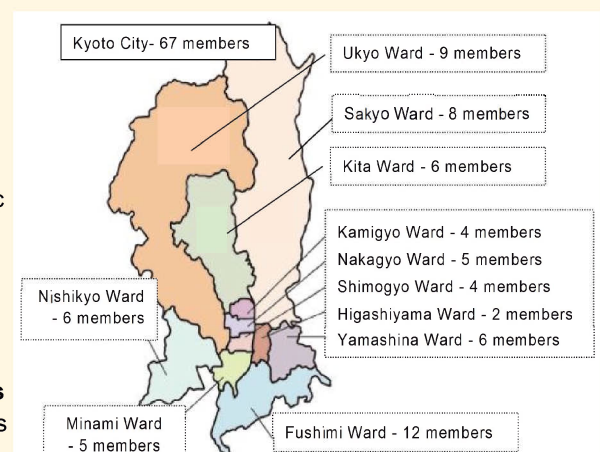
City Assembly Members, as representatives, **work towards governing the city in a way that reflects the voice of the people and promotes the welfare of all those living in Kyoto.** Furthermore, the **Kyoto City Assembly** consists of 67 members, each with a 4-year term. The graphic to the right lays out the number of Assembly Members in each voting district.

○ Chairperson and Vice-Chairperson

The **Chairperson** and **Vice-Chairperson** are elected from within the **City Assembly.** The **Chairperson** serves as the representative of the **Assembly**, maintains the structure of the assembly, moves meetings forward, and directs **Assembly** affairs. The **Vice Chairperson** serves as the **Chairperson** when the **Chairperson** is absent.

○ Factions

Factions are groups of **Assembly Members** that hold similar political opinions. In the **Kyoto City Assembly**, factions functioning as negotiation groups require 5 or more **Assemble Members.**



City Assembly Operations

Regular, annual meetings called “Regular Assembly” have been held at the Kyoto City Assembly since 2014.

Once the session (the period in which the Assembly can be active in a legal capacity) for these more-or-less regular, annual meetings is decided, meetings and councils are held to make motions, deliberate, and perform other functions within the session period. Along with these regular periods (4 times annually: May, September-October, November-December, and February-March), separate, special deliberation periods are set up if any sudden motions require such.

While the Assembly is in session, periodical committees are opened and bill referrals, petitions, etc. can even be deliberated outside the deliberation period. In addition, the Assembly will hear reports on city governance while actively carrying out investigations, observations, and other regulatory affairs.

○ **Plenary Session**

At a plenary session the **entire Assembly body** gathers, and final decisions are made by the Assembly on proposals and other matters.

○ **Committee**

In order for deliberation in the Regular Session to proceed effectively, a few **Assembly Members** will set up a committee and carry out a detailed, specialized examination of the proposal(s).



Assembly Hall

◇ **Standing Committees**

The Standing Committee, along with examining regulation proposals, petitions, and other items, carries out investigations related to city affairs assigned to respective committees.

General Affairs & Disaster Prevention Committee (13 members)	Environment & Welfare Committee (13 members)	Culture, Education & Child and Youth Support Committee (14 members)	City Planning Committee (14 members)	Industry, Traffic & Water Services Committee (13 members)
city planning, government finance, taxes, disaster-prevention, fire control etc.	environment, waste, welfare, medical-treatment, etc.	culture, sports, people's lives, childcare, education etc.	urban planning, landscaping, roads, parks, etc.	tourism, commerce, agriculture/forestry, city-bus, subway, water, wastewater, etc.

◇ **Special Committees**

In order to examine and investigate specific questions, committees are set up as necessary to deal with such questions until they are resolved. The budgeting and settling of accounts is examined by special committees (67 members) or subcommittees 1-3 (22-23 members).

◇ **City Assembly Steering Committee**

The Steering Committee is in place for correspondence, negotiations, and other internal **City Assembly** communications. Not limited to only running the Regular Session, the Steering Committee confers about rules of procedure, **Chairperson** inquiries, and other **City Assembly** operations.

Observing a City Assembly Session

○ **Observation (Plenary Session, Special Committee on Budgets and Settling of Accounts (Summary Mayoral Inquiry))**

Please come observe the **City Assembly** Plenary Session and Special Committee on Budgets and Settling of Accounts (Summary Mayoral Inquiry) (seeing eye dog, service dog, hearing dog accompaniment is allowed.)

Observation tickets will be given in the order of arrival at the City Hall Main Building Floor 1 Information Center starting 1 hour before the start of the session.

For the Regular Session, sign language interpretation can be requested up to 5 days in advance (not including weekends and holidays.)

○ **Monitor Broadcast (Committee)**

Standing Committee and Special Committee proceedings can be viewed in a City Council monitor observation room (seeing eye dog, service dog, hearing dog accompaniment is allowed.) Observation tickets will be handed out in order of arrival at the City Main Building 2nd Floor reception desk 1 hour prior to the start of the meeting.



Assembly Hall Audience Seating

○ **Internet Assembly Relay**

Plenary Session, Standing Committee, Special Committee are broadcast live and recorded online via the **City Assembly** homepage.

○ **Television Relay**

A live relay of the Plenary Session Faction Representative Questioning is aired by KBS Kyoto with sign language interpretation.

○ **District Government Building/Branch Location DVD**

In order for a greater number of **citizens** to connect with the **City Assembly**, a DVD (released 5 days to 1 week later) of the Special Committee on Budgets and Settling of Accounts (Summary Mayoral Inquiry) will be available at district government

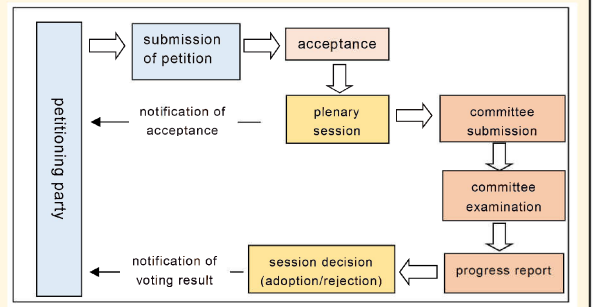
Appeals and Petitions

Any **person**, regardless of who they are, can submit a petition or appeal to the **City Assembly** in regards to a request they may have regarding the governance of the city.

Items introduced by an **Assembly Member** are called appeals, and those without **Assembly Member** introduction are called petitions.

Among appeals adopted during the Plenary Session, the **Mayor** and others are notified and the implementation of demands is requested to ensure that the measures taken are appropriate.

Moreover, petitions do not require **Assembly Member** introduction and the adoption of such are not voted on.



City Assembly Public Relations and Notices

City Assembly Bulletin and other Publications

The “Kyoto City Assembly Bulletin” and other publications (leaflets, posters, etc.) are issued to inform the **people of Kyoto** about the **City Assembly** and raise interest and awareness over city governance.

City Assembly Homepage

In order to more clearly explain the role and structure of the **City Assembly**, information on meeting schedules, deliberation results, and committee activities, etc. is included. Plenary Session and committee records, as well as implementation statuses, expenditure reports, and governmental spending documents are made public.

City Assembly Records and Information Room (City Hall Main Building 2nd floor)

Gazettes, government publications, Kyoto City and Kyoto Prefecture publications, books, newspapers, magazines, and various other types of documents are maintained for **Assembly Members** to research when running the city government. Also this facility is open to the public (the borrowing of documents is not allowed.)

Release of Information

You may browse the City Assembly Records and Information Room for Regular Session and committee records, reports concerning Assembly Member assets, government expenditure forms and receipts, and various other documents.



Basic Rules of the Kyoto City Assembly

On March 2014, the **Basic Kyoto City Assembly Regulations** were enacted, **establishing the concepts, principles, and system of the City Assembly and Assembly Members.**

Aim of Regulations

- To make clear the role of the City Assembly and Assembly Members
- To foster mutual recognition among all Assembly Members concerning the necessary form and direction the City Assembly must take.
- To provide a foundation for engagement in City Assembly reform.

The Ultimate Aim...

➡ **Answer to the people, elevate their lives, and contribute to the development of Kyoto City.**

Regulation Features

- To provide a preamble that expresses the essence of Kyoto and observes Kyoto's unique history of self-government
- To strengthen checks on the Mayor and related parties while regulating activism in policy making/proposal
- To recognize the value of an open City Assembly to its people
- To make the best use of the university-rich city of Kyoto and regulate the positive application of specialized knowledge

488 Kamihonnojimae-cho, Oikeagaru, Teramachi-dori, Nakagyo-ku, Kyoto-shi,
〒 604-8571

Kyoto City Assembly Office (F2 City Hall Main Bldg.)

General Affairs (general, conference observation)

TEL: 075(222)3700 FAX: 075(222)3713

Assembly Proceedings (parliamentary proceedings, appeals/ petition reception) TEL: 075(222)3703 * same department

Research (investigation, legislation, public notices)

TEL: 075(222)3697



(Revised on June, 2023)